


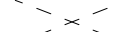

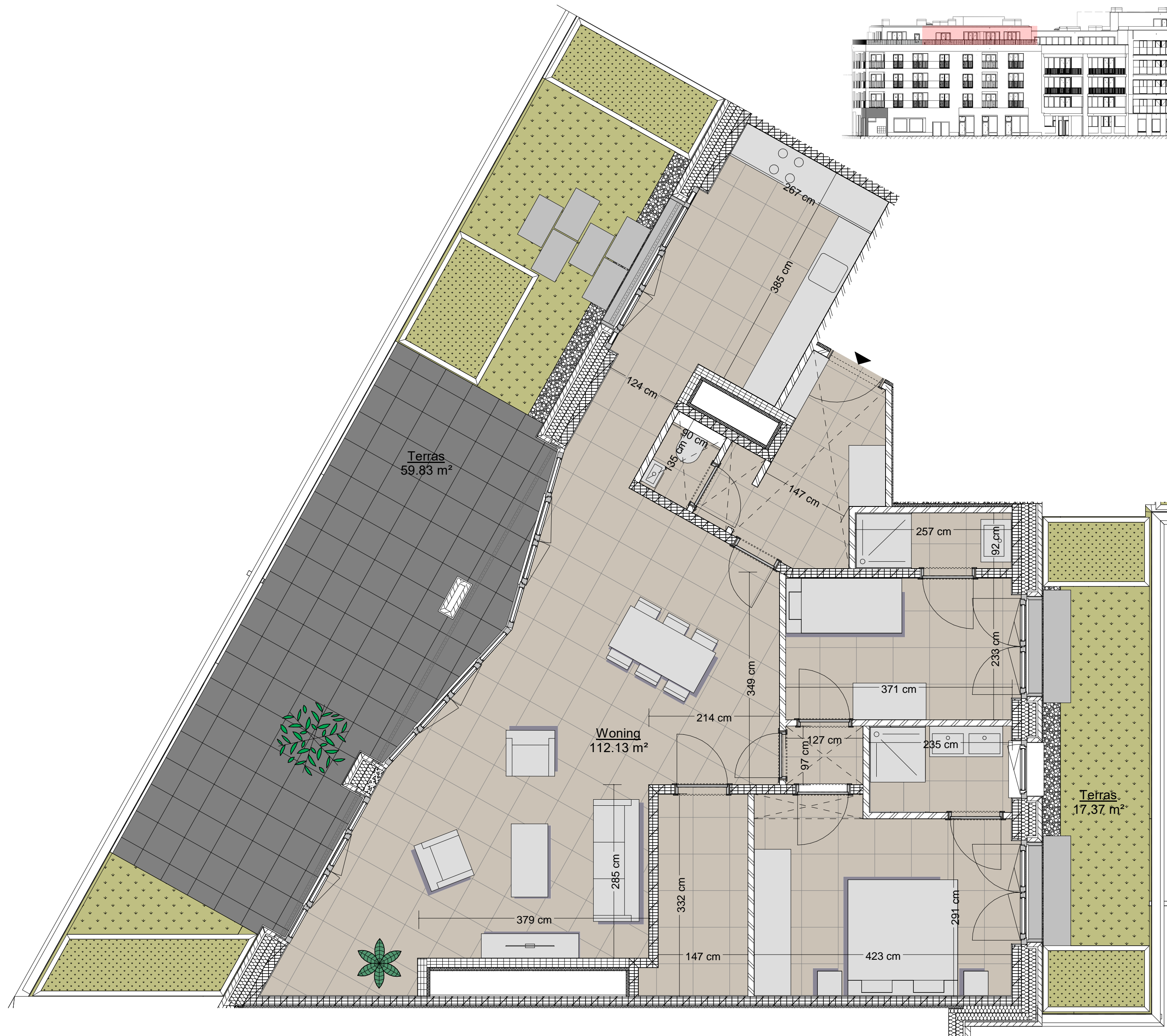
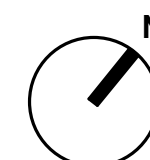



| B401 | BVO | slaapkamers |
|--------|-----------------------|-------------|
| Woning | 112.13 m ² | 2 |
| Terras | 17.37 m ² | |
| Terras | 59.83 m ² | |
| Totaal | 189.33 m ² | |

-  Draaikipraam
-  Draairaam / deur terras
-  Vast raam
-  Vals plafond
-  Zonwering

| | |
|-------------------|--------|
| Verdieping: | 4 |
| Vrije hoogte: | 2,73 m |
| Verlaagd plafond: | 2,45 m |



Meer info: www.tondelier.be
 Dit commerciële plan is louter indicatief. Voor materialen wordt verwezen naar het verkoopslastenboek

| | | | |
|---|---|--|---|
|  | TONDELIER Gent Bureau Bouwtechniek i.s.m. BUREAU BOUWTECHNIEK | Verkoopsplan B401 Datum: 14/09/2022 Schaal: var. Formaat: A2 Opp.: 0.25 m ² | VERKOOPSPANNEN J 0 0 A VPB401 B |
| | TEK: JH | Project 002588 | Autodesk Revit 2019 |