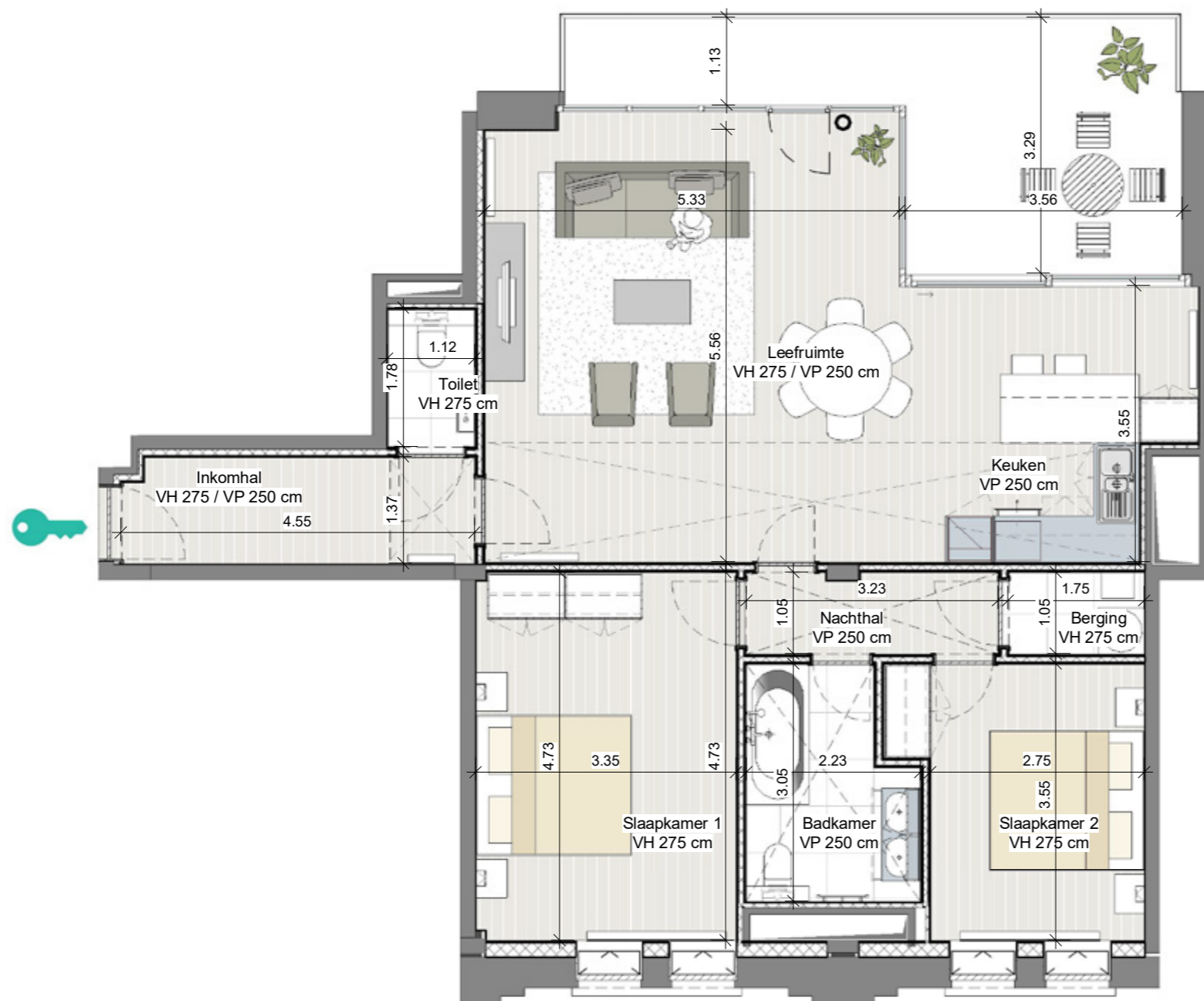
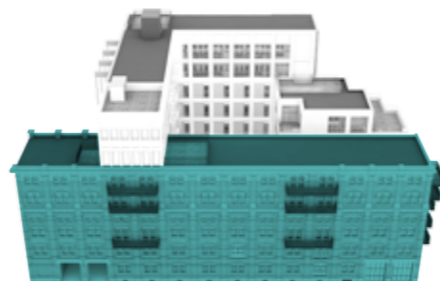




# KANAALGEBOUW

VERDIEPING 5  
APP. 9.504



- 2 Slaapkamers
- 1 Badkamer
- Woonoppervlakte 109 m<sup>2</sup>
- Oppervlakte terras: 17 m<sup>2</sup>
- Totale oppervlakte: 126 m<sup>2</sup>

